



Pennsylvania

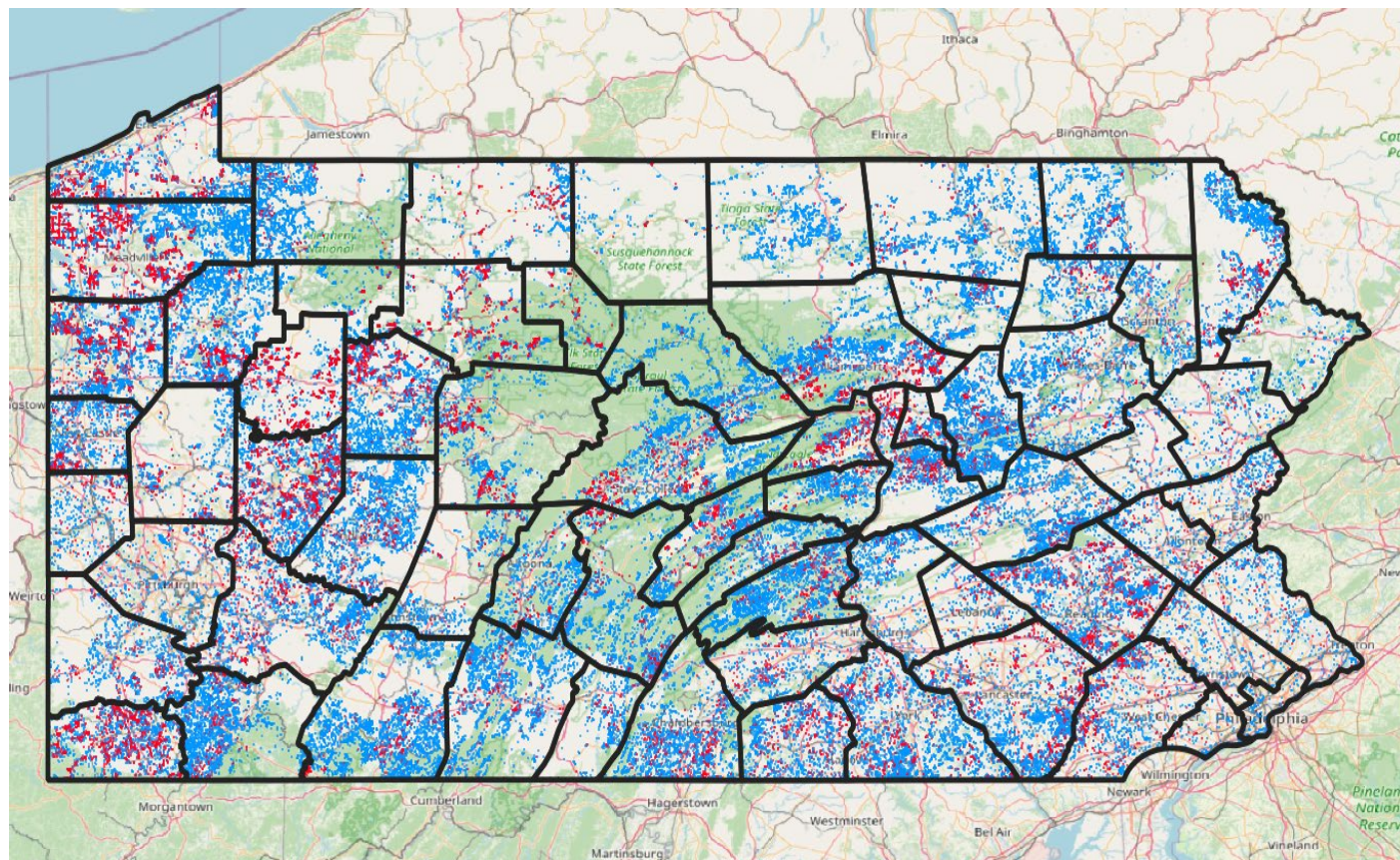
**Broadband Development Authority**

# **Broadband Equity, Access, and Deployment (BEAD) Program Overview Session #1**

# Webinar Series

## Presentation #1:

- BEAD Overview and Purpose
- Application Procedures and Timeline
- Eligibility
- Extremely High Cost Per Location Threshold
- Grant Awards





# BEAD Program Overview

- **The Broadband Equity, Access, and Deployment (BEAD) program was funded through the Infrastructure Investment and Jobs Act of 2021.**
- Pennsylvania received a total of **\$1,161,778,272.41** through its federal allocation.
- The federal administrator of the BEAD program is the **National Telecommunications and Information Administration (NTIA)**.
- BEAD will be administered in **Pennsylvania by the Pennsylvania Broadband Development Authority (PBDA)**.





# BEAD Timeline

*The application process will consist of two grant periods:*

- 1. Guidelines posted:** 30 days prior to opening the application period.
  - 2. Eligible Project Locations posted:** 10 days prior to opening the application period.
  - 3. Application Period One:** Applications will be accepted for 60 days.
  - 4. Application Review Period One:** Once the application period closes, PBDA will review submitted applications.
  - 5. Application Period Two:** Applications will be accepted for 60 days.
  - 6. Application Review Period Two:** Once the application period closes, PBDA will review submitted applications.
- *PBDA will then submit a Final Proposal to NTIA.*
  - *Upon NTIA acceptance of the Final Proposal, successful applicants will be granted awards and contracting will begin.*





# Eligible Applicants

- Cooperative organizations
- Not-for-profit organizations
- Public-private partnerships
- Private companies
- Public or private utility companies
- Public utility districts
- Municipalities or units of local government
- Internet service providers (ISPs) registered through the Federal Communications Commission (FCC)



Eligible entities include those with the technical, managerial, and financial expertise to design, build, and operate high-speed broadband service infrastructure within the Commonwealth of Pennsylvania.

# Broadband Serviceable Areas

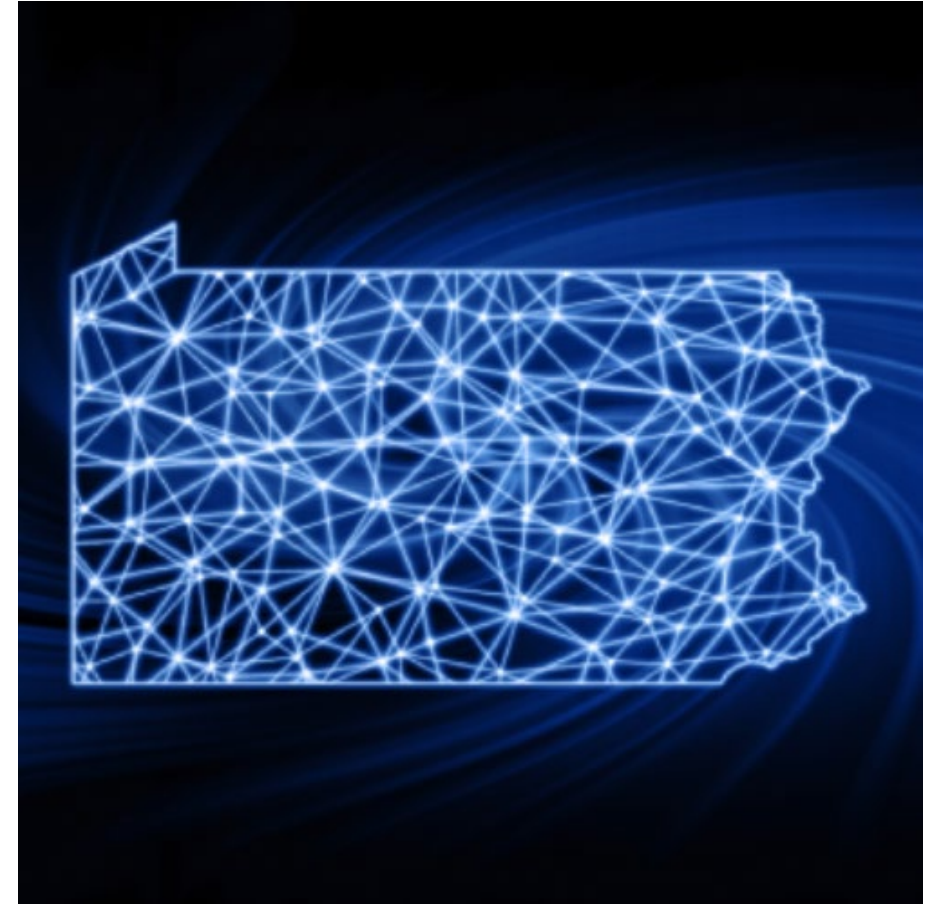
- Broadband Serviceable Areas, or **BSAs**, are based on U.S. Census Block Groups.
- A proposed project area may consist of a **single BSA** or an **aggregation of contiguous BSAs**.
- BSAs will contain only eligible **Broadband Serviceable Locations (BSLs)** and are constrained **within a single county**.



- PBDA has created a file containing **project area ID and BSL ID values**, limited to unserved and underserved locations, excluding enforceable commitments. **Applicants may apply for funding using only the data provided.**
- **BSAs may be combined** regardless of political jurisdiction and **may be as large as needed** to accomplish the proposed project.

# How to Submit Proposed Project Areas

- Proposed project areas and BSL-level data should be submitted to PBDA as a comma separated value (**CSV**) file.
- **Up to 5%** of BSLs in each BSA may be excluded, limited to the **costliest 5%** of BSLs.
- Files should contain the following:
  - BSA identification codes for all locations
  - Associated estimated costs per passing
  - The BSLs to be excluded from each proposed BSA
  - Associated estimated costs for excluded BSLs and justification for exclusion





## Eligible Projects

- Deploying and/or upgrading broadband network facilities in connection with a BSA.
- Data collection, broadband mapping, and planning to the extent necessary to facilitate the goals and deliverables of BEAD.
- Eligible Projects are limited to the defined project areas and must meet the minimum 95% BSL coverage threshold.





# Eligible Project Costs

## Eligible Costs:

- Physical improvements and acquisition
- Long-term leases
- Multi-family residential deployment
- Planning, design, and engineering
- Personnel costs
- Network software upgrades
- Workforce development
- Administrative costs

## Ineligible Costs:

- Non-deployment uses
- Acquisition of spectrum license(s)
- Operating expenses other than grant administration costs
- Short-term operating leases
- Payment of interest on principal for outstanding debt instruments, or other debt service costs





# Extremely High Cost Per Location Threshold

**Extremely High Cost Per Location Threshold (EHCPLT) will be determined after the submission of period one applications.**

- Where an Other Last-Mile Deployment Project **overlaps** with a proposed Priority Broadband Project that does not exceed the threshold but meets all program requirements, PBDA will follow the deconfliction process.
- Should a proposed Priority Broadband Project **exceed** the threshold, and if there is an overlapping proposed project that is less investment-intensive and presents a viable application, that project may be awarded.

**PBDA will base evaluations of project area costs on two key progress indicators:**

- PBDA will evaluate project costs received through its Capital Projects Fund Broadband Infrastructure grant program.
- NTIA cost data to determine the standard deviation of statewide costs per BSL, and will determine outlier costs, evaluate outliers to gain an understanding of median costs, and establish the EHCPLT.



# Grant Awards

- There is no minimum or maximum grant amount for any project.
- Funds will be distributed through a reimbursement or project milestone-based fixed amount sub-awards. Ten percent of awarded funds will be reserved until after a final report is submitted and accepted.
- Projects must reach substantial completion no later than four years after the date on which the grantee receives the award.





# Match

- Per NTIA requirement, projects require a **minimum 25% share of the total project cost** in matching funds.
- Funds meant to deploy broadband under the following programs will be accepted, to the extent permitted by laws (for both programs)
  - **Families First Coronavirus Response Act**
  - **CARES Act**
  - **Consolidated Appropriations Act**
  - **ARPA**
- Loan funding issued through a federal agency, such as **USDA ReConnect**, may also be used as match funding.
- **In-Kind Match:**
  - Must follow uniform guidance set forth in 2 CFR Part 200.
  - In-kind contributions are non-cash donations of property, goods or services, which benefit a federally-assisted project, and which may count toward satisfying the non-federal match requirement of a project's total budgeted costs.
  - Must be allowable and allocable project expenses.







Pennsylvania

**Broadband Development Authority**

Please email [RA-DCPBDA\\_BEAD@pa.gov](mailto:RA-DCPBDA_BEAD@pa.gov) with questions.

Thank you!

**broadband.pa.gov**