



Pennsylvania

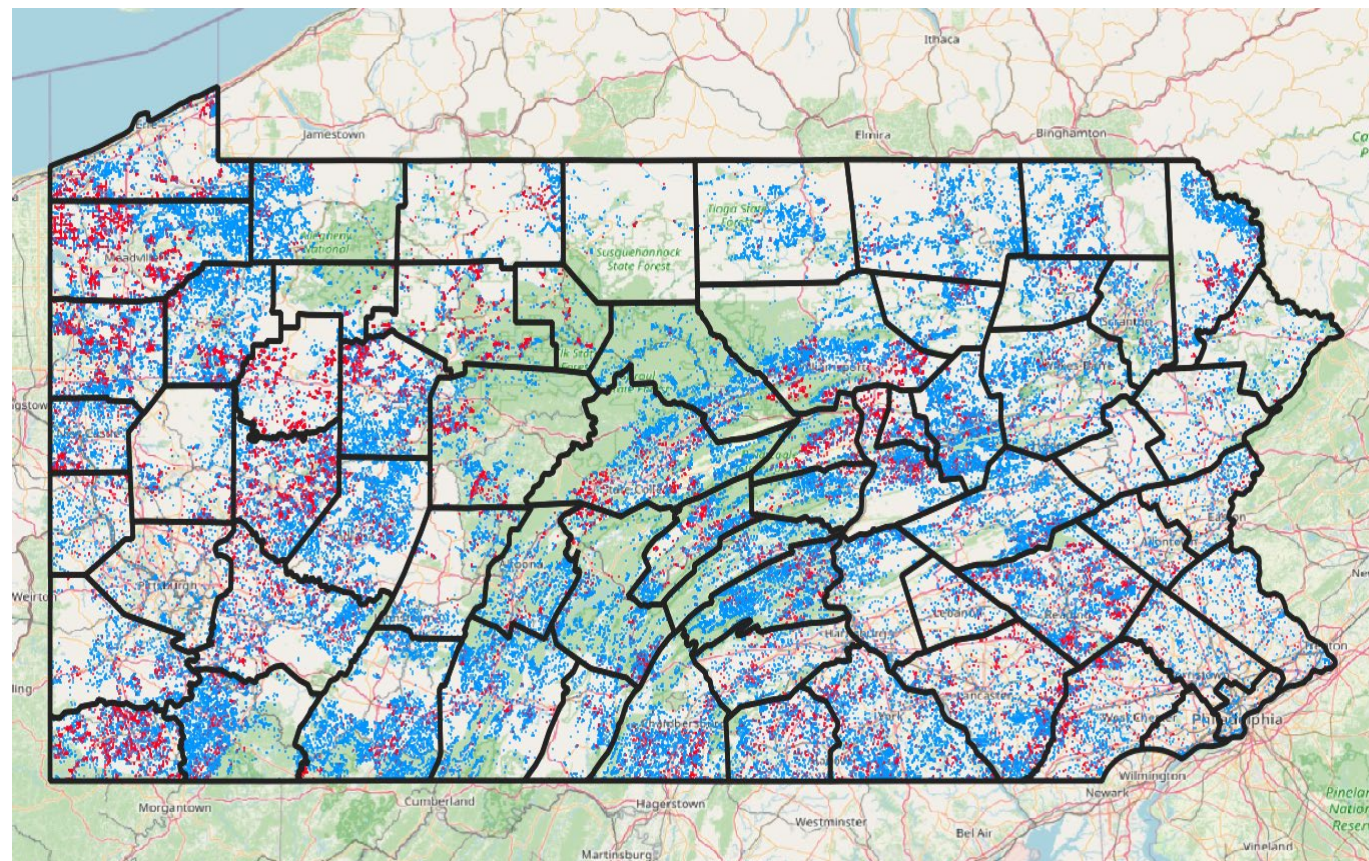
**Broadband Development Authority**

# **Broadband Equity, Access, and Deployment (BEAD) Program Overview Session #3**

# Webinar Series

## Presentation #3:

- Broadband Ready Communities
- Permitting
- Letters of Credit
- Affidavits and other Required Forms
- Eligible Location Determinations
- Next Steps





# Broadband Ready Communities



Pennsylvania  
Broadband Development Authority

## Broadband Ready Communities (BBRC)

### Overview

The [Broadband Ready Communities \(BBRC\)](#) program aims to reduce procedural, policy, and permitting barriers to broadband deployment at the municipal level and to encourage broadband infrastructure investment within participating Pennsylvania communities.

When a municipality joins, it becomes a Broadband Ready Community, showing their commitment to making broadband setup smoother in Pennsylvania. It is a signal to encourage nonprofit, private, and public/private partnership (P3) broadband entities to invest in a community. Joining the BBRC Program is optional but highly recommended.



### Who Can Apply

- Municipalities
- Counties

### Benefits

BBRC participants will be showcased in various ways through the [Pennsylvania Broadband Development Authority \(PBDA\)](#):

- Waheite



### How to Apply

- The Broadband Ready Communities (BBRC) program is a resource for local governments to:
  - Increase investment and opportunity through public-private partnerships.
  - Reduce procedural, policy, and permitting barriers to broadband deployment.
  - Encourage broadband infrastructure investment within participating PA communities.
- Participation designates a municipality as a “Broadband Ready Community” and establishes a broadband champion at the municipal or county level.
- BBRC participation is optional but encouraged.

BBRC is not a regulatory program. No funds are directly attached, and it is not an eligibility requirement for BEAD or other PBDA programs.



# Historical and Environmental Laws

## The National Environmental Policy Act (NEPA)

- Requires federal agencies to assess the environmental effects of proposed actions before making decisions.
- It aims to ensure that all branches of government consider the environment prior to undertaking any major federal action that significantly affects the environment.

## Section 106 of the National Historic Preservation Act (NHPA)

- Requires federal agencies to consider the effects of projects on historic properties before proceeding.
- Ensures that preservation values are integrated into federal project planning and execution, allowing public input and consultation with relevant stakeholders.







# Letters of Credit Commitment

- NTIA requires that applicants commit to supplying a Letter of Credit if selected for a BEAD award.
- A template for this commitment will be supplied by PBDA. It will also be available on PBDA's BEAD program page.
- NTIA will waive the Letter of Credit requirement under the following circumstances:
  1. If a qualified credit union is used.
  2. If Performance Bonds (valued at 100% of the awarded amount) are used.
  3. Upon reduction in the amount required for a Letter of Credit/Performance Bonds upon completion of project milestones.
  4. Alternative initial Letter

*More information about Letter of Credit waiver options can be found in Appendix II of the program guidelines.*



# Project Area Determinations

- Within 10 business days after the end of the application round, PBDA will make the applied for unserved, underserved, and community anchor institutions available for review.
- PBDA will notify provisional BEAD award winners at the conclusion of both grant application and review rounds.
- A finalized spreadsheet of eligible BSLs that have been assigned to project areas will be posted publicly online.
- If a project area has been adjusted by PBDA, applicants may contest based on criteria that the provision of service would be fiscally infeasible.





# Reporting Requirements

**Grantees are required to submit semi-annual reports, covering topics such as *(but not limited to)*:**

- The status of all service locations served by BEAD infrastructure
- Identifying new locations served within each project area
- Reporting on contracts and sub-contracts
- Broadband service speed updates
- Labor reporting
- Other reasonable reporting requirements determined by PBDA

***Grantees must maintain sufficient records to substantiate reporting data and information upon request.***





# BEAD Application Technical Assistance

PBDA is committed to offering support to all prospective BEAD grantees to enable:

- Technically viable, robust, and competitive project proposals;
- Sustainable project goals and objectives;
- Compliance with all regulatory and statutory requirements set by NTIA;

In addition to our webinar series, PBDA will offer a series of “Office Hours” for all prospective applicants or interested stakeholders. More information is available on PBDA’s “News and Events” webpage.



Pennsylvania  
**Broadband  
Development  
Authority**





Pennsylvania  
**Broadband Development Authority**

Please email [RA-DCPBDA\\_BEAD@pa.gov](mailto:RA-DCPBDA_BEAD@pa.gov) with questions.

Thank you!

**broadband.pa.gov**